



ADSI Stage-IT Software Solution

Stage-IT is a freight consolidation tool to dramatically reduce freight costs and enhance customer service for both domestic and international shipments.

Smart, Simple Freight Consolidation

Consolidating shipments is easier when you add Stage-IT to your shipping operations. Stage-IT is a flexible desktop solution to enable warehouse personnel to proactively plan for consolidated shipments as they process the day's orders.

Real-Time Detection of Consolidation Opportunities

Stage-IT is installed as an integrated solution that receives order and inventory information for the host ERP and supply chain systems.

As shipments are received from the host system, Stage-IT analyzes the order pool and identifies shipments eligible for consolidation. Consolidation instructions can also be assigned during the order process.

Order and shipments are identified by a unique barcode. This barcode is scanned as orders are processed for shipping. Stage-IT identifies shipments that are part of a larger consolidation and sends an alert to the staff to divert those shipments to the appropriate staging area.

Once Stage-IT receives all shipments that are part of a consolidated order, it closes the order and automatically sends the order on to Ship-IT™ to be processed.

The shipping staff can view potential consolidations on-screen and compare route, rate and service options offered by multiple carriers.

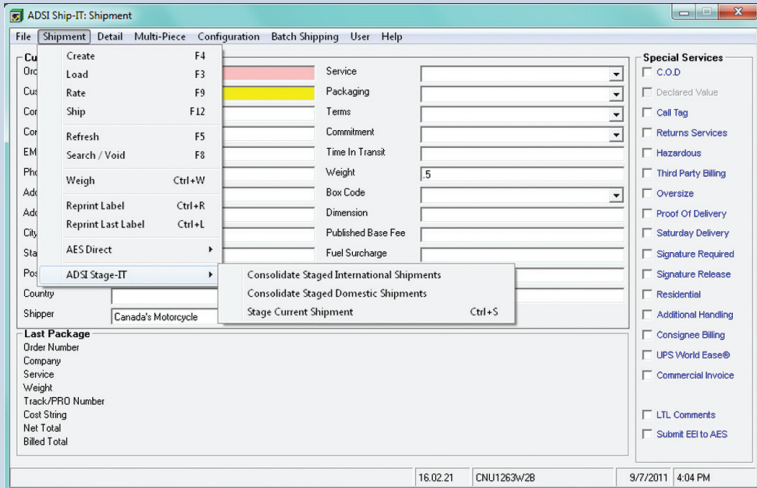
Benefits of Stage-IT Consolidation

- **More efficient workflow.** Stage-IT eliminates the guesswork and inefficiencies associated with manually identifying and staging consolidated orders. This keeps the workflow moving more efficiently.
- **Better control over freight costs.** Stage-IT works to ensure that all consolidation opportunities have been identified before the shipment is routed and rated, so the most cost-effective freight rates can be applied.
- **Streamlined customs clearance.** Ship-IT can be used to consolidate export shipments by country and by customer, resulting in an expedited clearance process when they arrive at customs.
- **Fast, accurate preparation of shipment documents.** Stage-IT seamlessly passes all closed orders on to the Ship-IT module for automatic label and document generation.

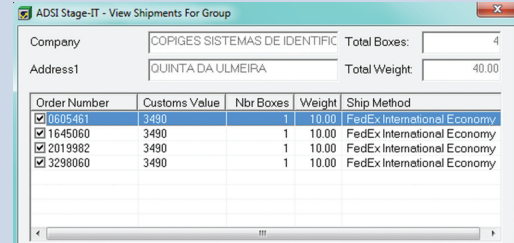


Our Turn-Key Solutions Lead Businesses to Greater Profitability.

Streamline Large Shipments for Efficient Workflow



Shippers can achieve even greater control over freight costs by adding Stage-IT to their Ship-IT multi-carrier system.



Once a group of shipments is consolidated, Stage-IT passes it to Ship-IT for a comparison of delivery options.



Stage-IT captures details on shipments eligible for consolidation and displays them on-screen for the shipping staff to review and modify, if necessary.

Configuration Options

Stage-IT can be configured to exchange information with a wide range of host systems, including order entry, warehouse management, inventory and ERP systems.

Stage-IT also provides a flexible user screen that can be configured to match your specific needs.

ADSI can install Stage-IT as a desktop or handheld solution on your existing hardware or our professional services team can recommend a complete, turn-key solution which includes hardware and software.

Reduce Your Freight Bill Today

To find out how you can deploy Stage-IT to reduce your freight costs and enhance service, call ADSI at 877-755-2374 today.



Multi-Carrier Shipping Software ■ Barcode Solutions ■ Integration Services

877-755-2374 ■ sales@adsionline.com ■ www.adsionline.com

955 N. Plum Grove Road, Suite E ■ Schaumburg, IL 60173